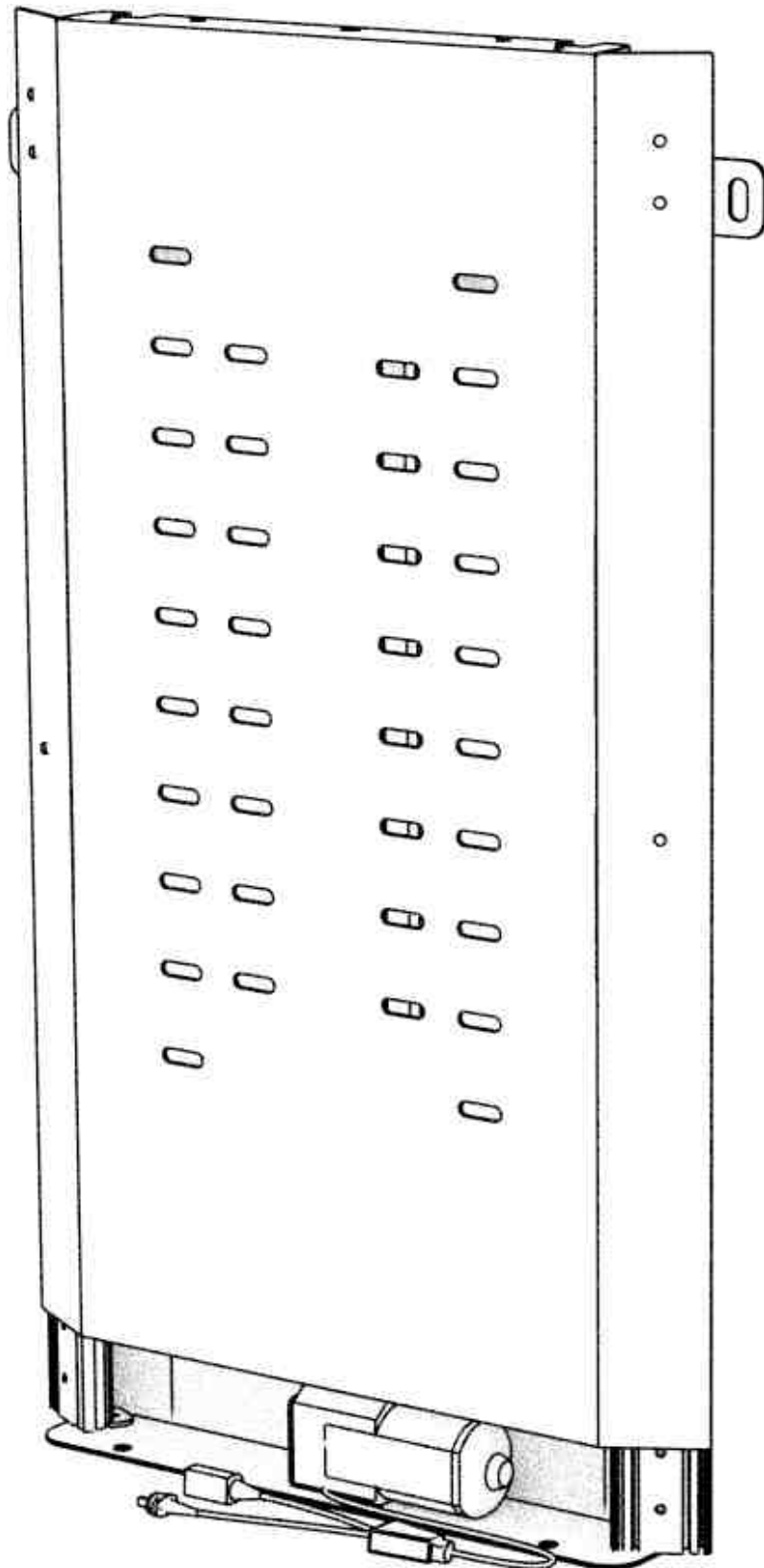
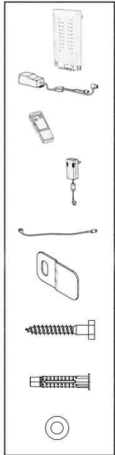


# DQ TV Lift x05



# DQ TV Lift x05

Model 505 / 605 / 705 / 805

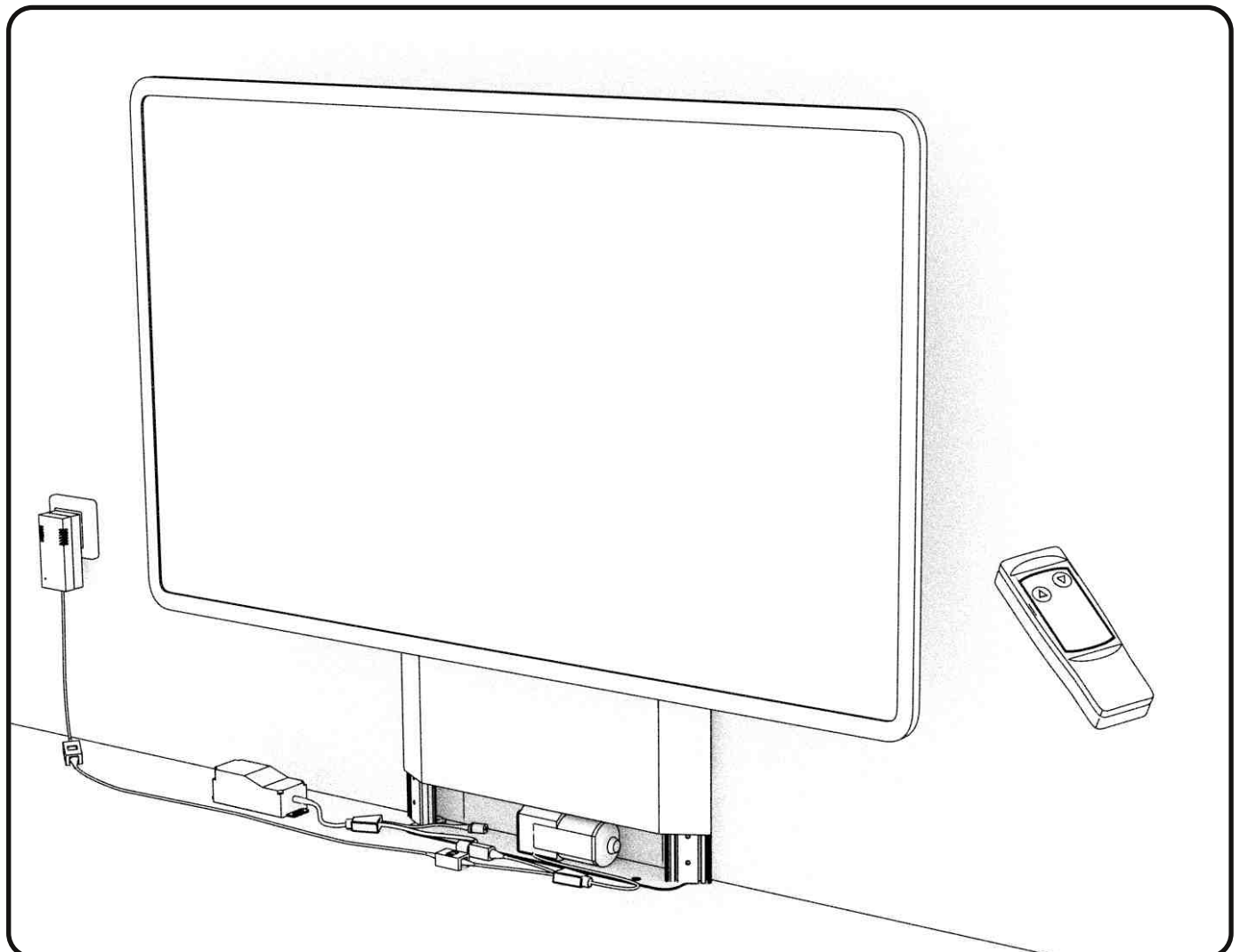
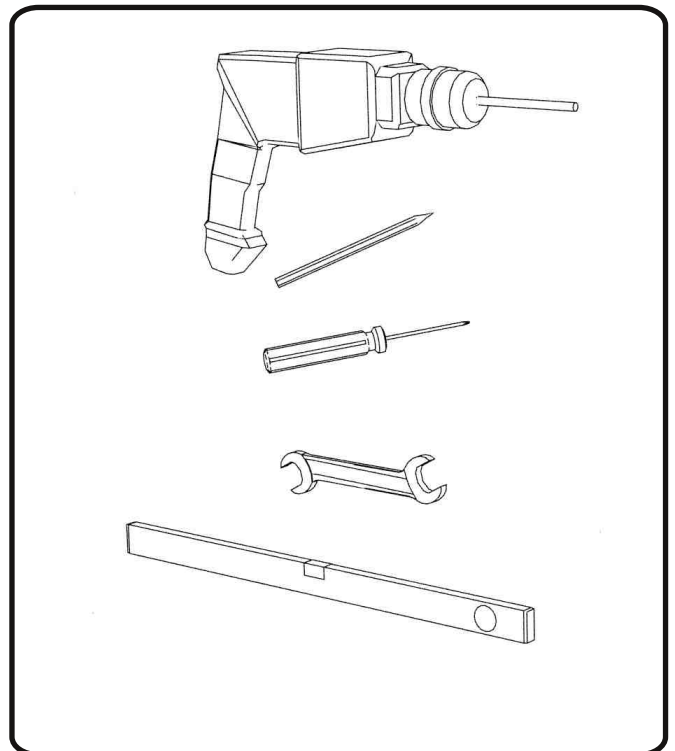


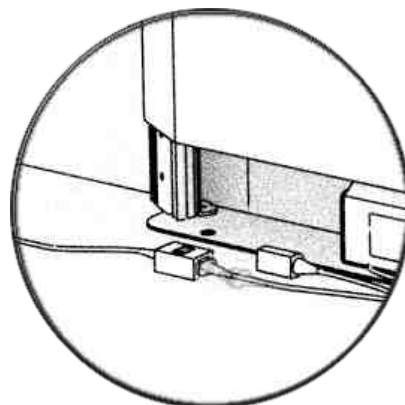
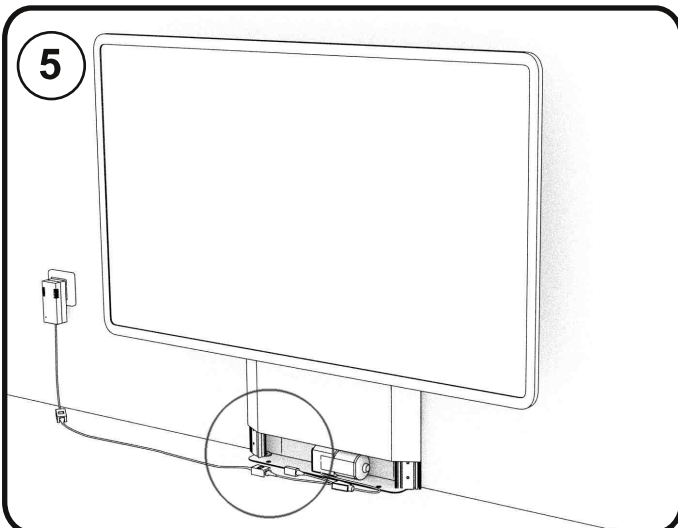
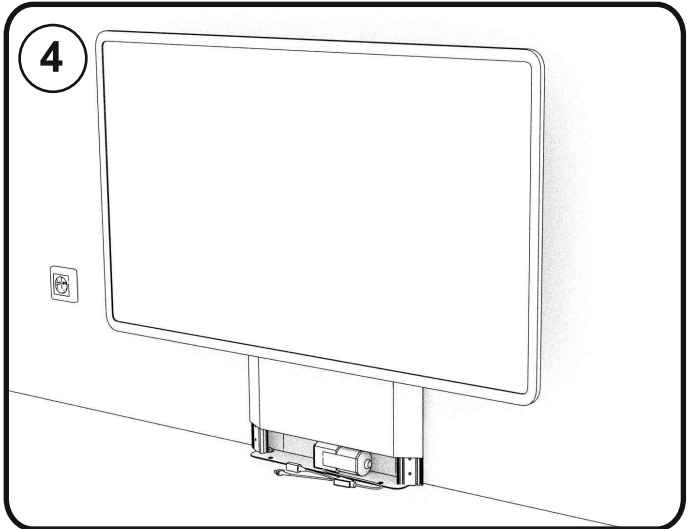
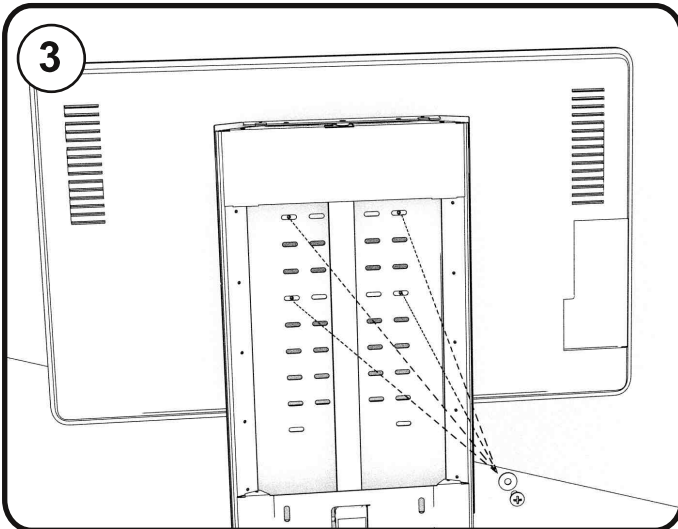
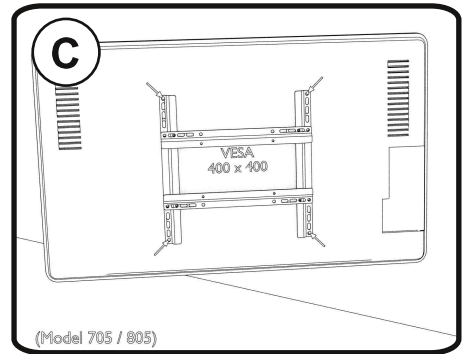
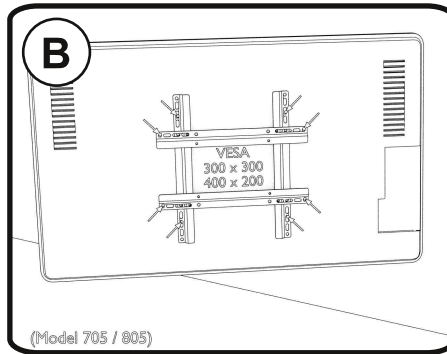
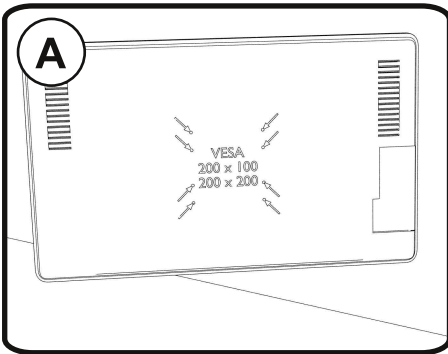
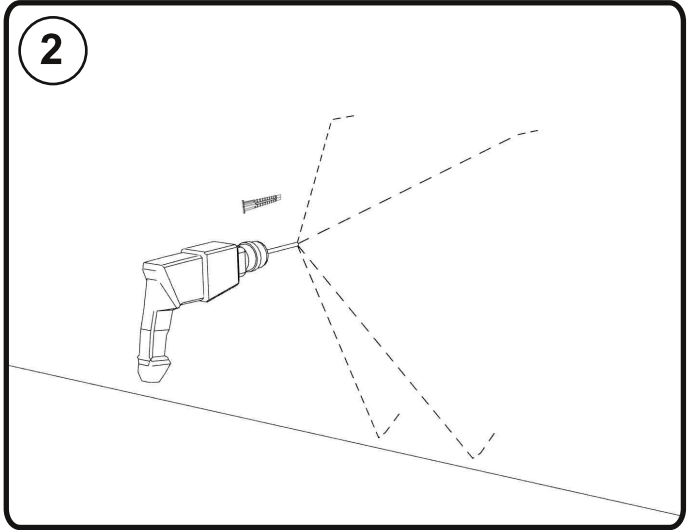
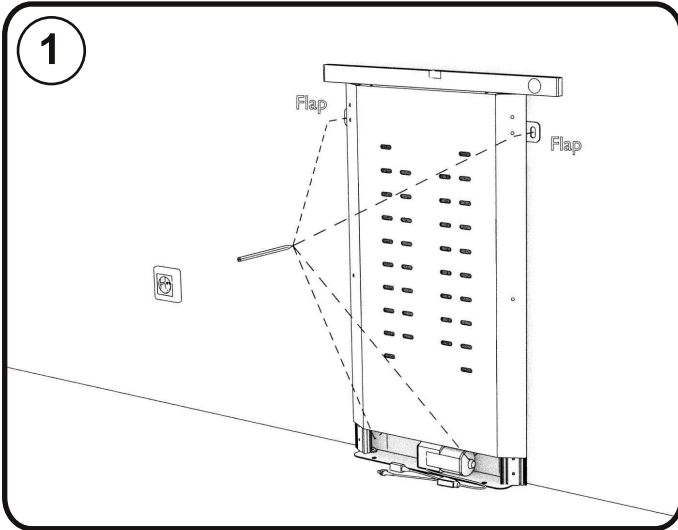
- 1 x DQ TV Lift
- 1 x RF Receiver
- 1 x RF Control
- 1 x Power Adapter
- 1 x Power Cable
- 2 x Flap
- 4 x Screw 6x40
- 4 x Dowel 8
- 4 x Washer

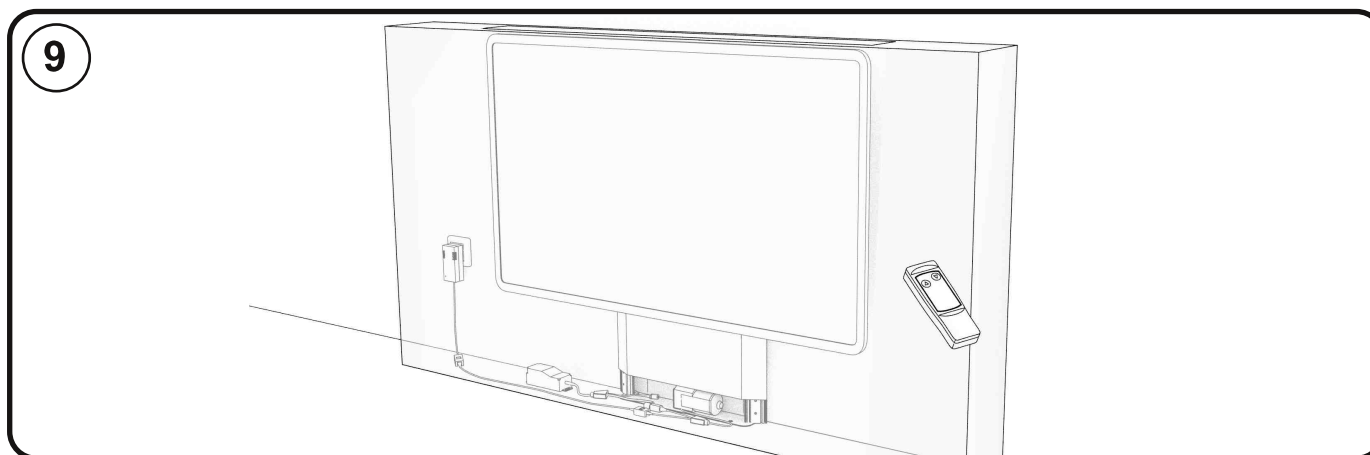
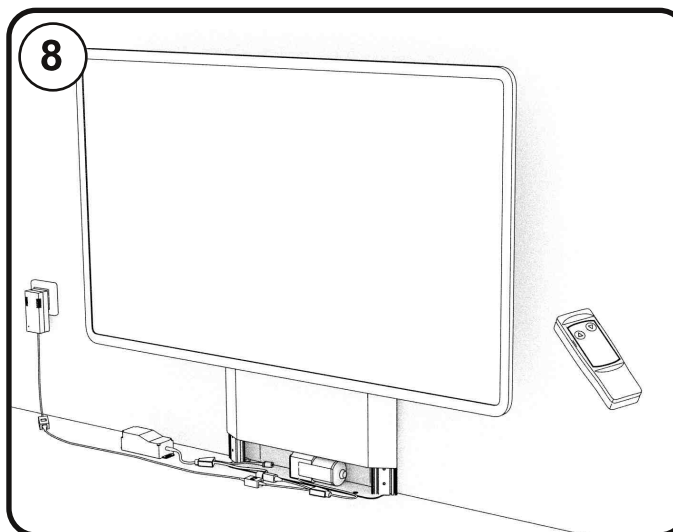
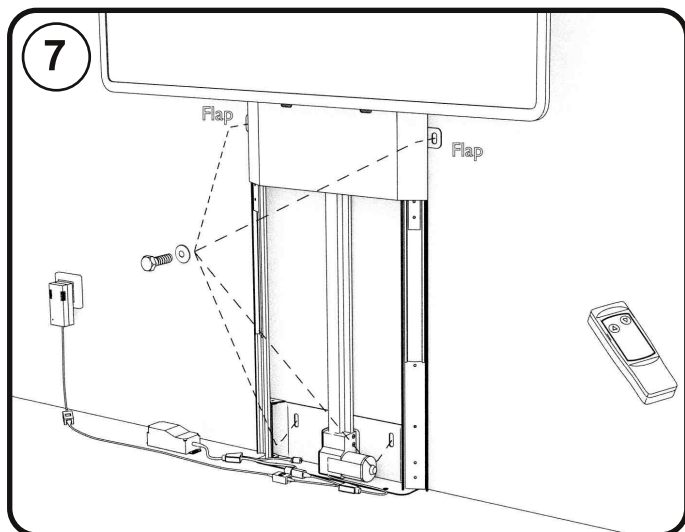
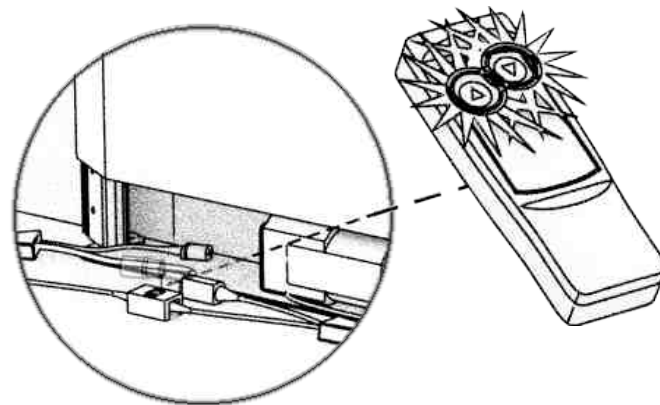
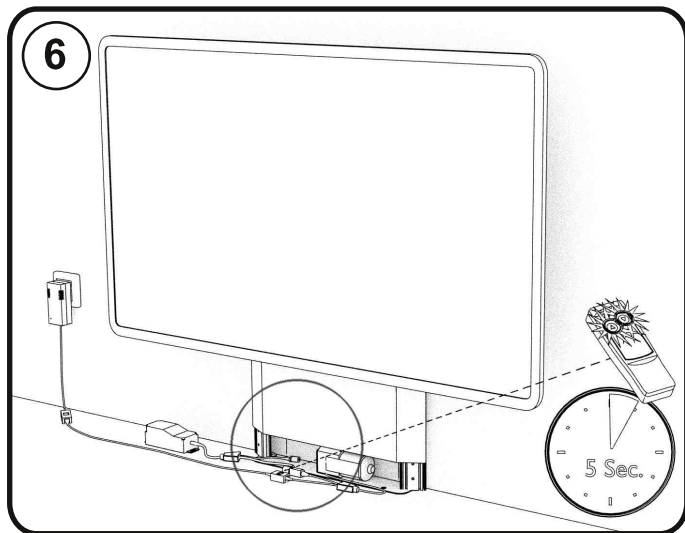
VESA Adapter (Model 705 / 805)



- 8 x M6x12
- 8 x Washer 16x6,5
- 4 x VESA







Resetten van de lift en de afstandsbediening als de lift niet meer reageert op de afstandsbediening:  
 Volledige spanning eraf halen, stekker verwijderen (ook het lampje van de adapter moet gedoofd zijn). Spanning er weer op doen en direct de 2 knoppen van de afstandsbediening indrukken. De TV lift zal enkele keren op en neer gaan. Na een lange piep, de knoppen loslaten en de TV lift reageert weer op de afstandsbediening.

Zurücksetzen des Liftes und der Fernbedienung, wenn der Lift nicht mehr auf die Fernbedienung reagiert:  
 Ziehen Sie den Stromadapter für einen kurzen Moment aus der Steckdose. Stellen Sie die Stromverbindung wieder her und drücken dabei die beiden Tasten auf der Fernbedienung. Der TV-Lift fährt ein auf und ab. Nach einem langen Piepton, lassen Sie die Tasten los und der TV-Lift reagiert wieder auf die Fernbedienung.

Resetting the lift and the remote control when the lift stops responding to the remote control:  
 Remove the entire voltage, remove the plug (also the light of the adapter must be off). Re-energize and immediately press the 2 buttons on the remote control. The TV lift will go up and down a few times. After a long beep, release the buttons and the TV lift responds again to the remote control.